

# stm REVOLUTION

THE MOST EFFICIENT CANNABIS GRINDER IN THE WORLD

## HIGHLIGHTS



Process Up To 400 lbs. Daily



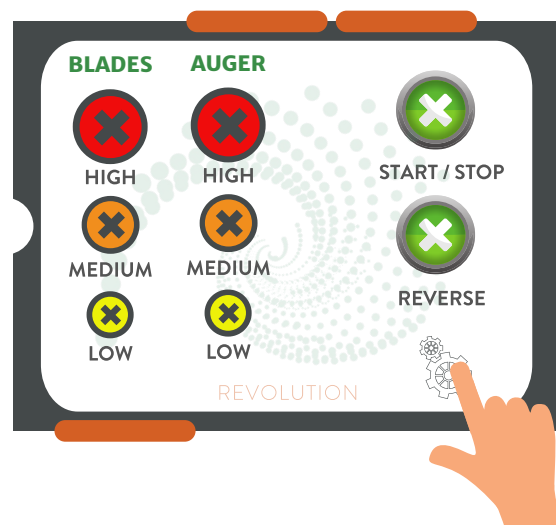
Interchangeable Particle Screens for Extraction & Pre-Rolls



STM Proprietary, Highly-Polished Dual Stainless Steel Serrated Blades



Homogeneous & Consistent Particles



# BENEFITS

## Maintain Product Integrity

No plastic whips, meat grinders, blenders or flour mills that heat and pulverize months of your hard-work. With the Revolution's proprietary dual-blade system, you can count on minimal degradation to keep your trichomes, terpenes and cannabinoids intact.

## High-Yield Extraction

The extraction particle screen creates optimal, homogeneous particle sizes specifically for extraction, providing your team the ability to achieve the highest possible yields.

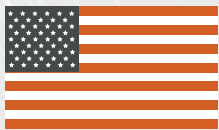
## Ultimate Pre-Roll Consistency

The RocketBox has met it's perfect match. Interchangeable particle screens means you can finally achieve the consistency deeply necessary to limit weight variance and allow for a proper, evenly packed joint.

## Increase Profit Margins

Decrease labor by removing the need to run the same material through multiple times or through numerous grinder systems. With a special non-stick coating on certain parts, ease of cleaning also means your team can spend more time processing and less time cleaning tedious machinery.

Made in USA



Food-Grade



1-Year Warranty



OSHA Compliant



# stm REVOLUTION

## PRODUCT COMPARISON

	stm REVOLUTION	WEED-WACKER STYLE SYSTEMS	BLENDERS & MILLING SYSTEMS
MECHANISM	<b>Dual-Blade System</b> Highly-Polished Stainless Steel	<b>Weed-Wackers</b> Plastic Whips Degrade & Contaminate Product	<b>Food/Flour Mill</b> Difficulty with Sticky Cannabis Strains
HOPPER & CAPACITY	<b>Up To 400 LBS Daily</b> Minimizes Labor	<b>Holds 2 to 7 LBS</b> Throughput Varies	<b>Throughput Varies by Unit</b>
PRODUCT QUALITY	<b>Cuts with Precision</b> Maintains Quality Min. Trichome Loss Low RPM = No Terp Loss	<b>Whips &amp; Thrashes Around Material</b> High Trichome Loss High RPM = Terp Loss	<b>Aggressive Milling</b> Diminishes Quality High Trichome Loss High RPM = Terp Loss
CLOGGING & CLEANING	<b>Auto Forward &amp; Reverse</b> Non-Stick Coatings Simple to Disassemble Dishwasher Friendly	<b>No Anti-Clog Tools</b> No Non-Stick Coating Kief Builds Up Quickly Lengthy Cleaning Process	<b>No Anti-Clog Tools</b> No Non-Stick Coating Kief Builds Up Quickly Lengthy Cleaning Process
STEMS & CONSISTENCY	<b>Slices Stems</b> Outdoor & Indoor 2 Particle Screens Coarse & Fine Homogeneous Particles	<b>Whips Stems</b> Bulky Stems Don't Break Fragile Stems Escape Material Must be Very Fine to Achieve Consistency	<b>Grinds Stems</b> Must Be Ground Very Fine to Achieve Consistency; Thickest Settings Still Too Fine for Pre-Rolls
APPLICATIONS	<b>Even Consistency</b>  <b>Pre-Rolls:</b> <i>Even Pack, Minimizes Weight Variance</i>  <b>Extraction:</b> <i>Even Particles = Increased Yields</i>	<b>Consistency Issues</b>  <b>Pre-Rolls:</b> <i>Uneven Pack, Higher Weight Variances; Difficult Smokability</i>  <b>Extraction:</b> <i>Uneven Particles = Decreased Yields</i>	<b>Consistency Issues</b>  <b>Pre-Rolls:</b> <i>Uneven Pack, Higher Weight Variances; Difficult Smokability</i>  <b>Extraction:</b> <i>Uneven Particles = Decreased Yields</i>



# stm REVOLUTION

## NON-STOP WORKFLOW

### STEP 1:

Add Material to Hopper



### STEP 2:

Set Speed &  
Press Start



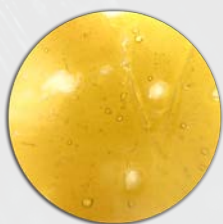
### STEP 3:

Collect Ground  
Material from Chute



### STEP 4B:

Run Through  
Extraction Machine  
for Concentrates



### STEP 4A:

Run Through RocketBox  
or Mini-RocketBox  
for Pre-Rolls



# stm REVOLUTION

## PRICING & ORDERING GUIDE

---

### **STM REVOLUTION** \$12,500 + *shipping*

Includes:

- (1) Dual-Blade System
- (1) Fine Particle Screen
- (1) Coarse Particle Screen

### **DUAL-BLADE SYSTEM** \$1,250

Highly-Polished, Food-Grade 304 Stainless Steel  
Serrated Blades

### **FINE PARTICLE SCREEN** \$375

Food-Grade 304 Stainless Steel Particle Screen

### **COARSE PARTICLE SCREEN** \$375

Food-Grade 304 Stainless Steel Particle Screen





# stm REVOLUTION

## FREQUENTLY ASKED QUESTIONS

### HOW DOES THE STM REVOLUTION WORK?

1. Choose desired speed (low/med/high) for auger system and (low/med/high) for blade system. Initiate Start/Stop on the touch screen control panel before adding material into the hopper, where the auger system will then begin to pull the material down into the blade area.
2. Material is cut by proprietary, highly-polished stainless steel serrated blade before falling through 1 of 2 interchangeable particle screens.
3. As material reaches the optimal size and exits the screen, the anti-clogging agitator creates vibrations which push the final product down and out the chute for easy collection.

---

### HOW IS TRICHOME LOSS AVOIDED; IS THE PRODUCT DEGRADATION MINIMAL?

The STM Revolution cuts and slices material with precision, whereas whipping/milling blasts the trichomes off of the plant with force. An analogy would be using scissors to cut something vs. thrashing or whipping something around to break it down.

---

### WHAT IS THE CAPACITY/SPEED/THROUGHPUT?

The STM Revolution is equipped with both a hopper and chute for a continuous feed, however the throughput depends on the quality and the moisture level of your material as well as nug and stem size. The unit may process up to 400 lbs of flower daily. Please view this video for important information on material preparation - [Revolution Grinder Pre-Prep](#).

---

### DOES THE SYSTEM CREATE ANY HEAT?

Heat and friction may occur in the case of a clog but would not generally apply in standard use due to the application of a lower RPM. Many competitors do operate at a significantly high RPM (upwards of 25,000-37,000 RPM) where temperatures can begin to evaporate and cause damage to highly valuable terpenes and cannabinoid.

